

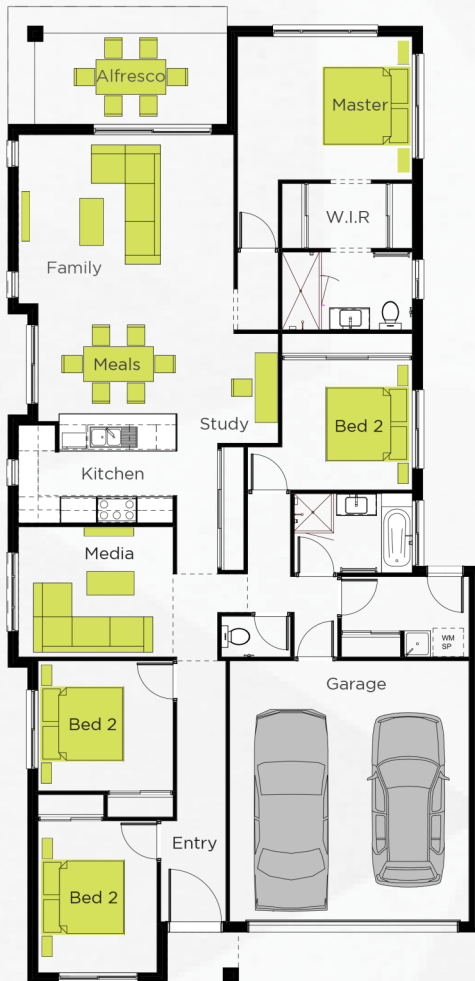


\$484,087

LOT 16 GOLDMINE RD
"THE WOODS"
ORMEAU

ELWOOD 210
LIFESTYLE FACADE

BLOCK SIZE | 375M²



COMPLETE LIFESTYLE INCLUSIONS WITH LUXURIES YOU DESERVE AND HAVE COME TO EXPECT AS STANDARD!

FACADE AS ADVERTISED

COVENANT REQUIREMENTS & SITE WORKS

SEALED EXPOSED AGGREGATE TO DRIVEWAY AND ENTRY PORCH

TILED FLOORS, CARPET TO ALL BEDROOMS
20MM SMARTSTONE BENCHTOPS THROUGHOUT
WATERFALL END TO KITCHEN ISLAND BENCH

900MM UNDER BENCH OVEN, GAS COOKTOP, RANGE HOOD & 600MM DISHWASHER

2X PANASONIC REVERSE CYCLE SPLIT SYSTEM AIR CONDITIONER TO LIVING & MASTER BEDROOM

BARRIER SCREENS & WINDOW COVERINGS

LED DOWNLIGHTS THROUGHOUT

5 STAR RINNAI GAS HOT WATER SYSTEM

INTEGRATED ALFRESCO SLAB TILED & EXTENDED UNDER EAVES

COLOURBOND ROOF

COMPLETE LANDSCAPING, FRONT GARDEN, FRONT AND REAR TURF, FENCING, CLOTHES LINE & RENDERED STYLE LETTERBOX

Luke Paradise
Sales Manager
M. 0491 240 400

E. luke@paradigmhomes.com.au

CONTRACT
PRONTO

MORE INCLUDED
AS STANDARD

GUARANTEED
BUILD TIMES

FIXED PRICE
SITE COSTS

Note: Rendered Brochure image may depict fixtures, finishes or features not included or provided by Paradigm Homes. Land not supplied by Paradigm Homes. Land developer terms and conditions apply, land prices and availability are subject to change without notice. Price is current at the time of publication and based on the advertised facade, complete lifestyle inclusions and site specific works. Prices are subject to change without notice and are subject to a site inspection, soil test and contour survey. Measurements are approximate only.

