

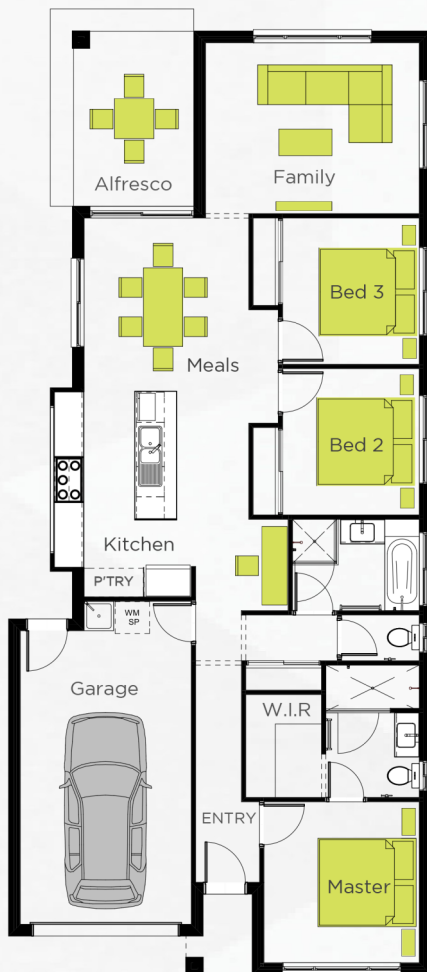


\$381,449

LOT 63 CELIA STREET
"MONTEREA"
RIPLEY

COTTESLOE 150
PLANTATION FACADE

BLOCK SIZE | 315M²



COMPLETE LIFESTYLE INCLUSIONS WITH LUXURIES YOU DESERVE AND HAVE COME TO EXPECT AS STANDARD!

FACADE AS ADVERTISED

COVENANT REQUIREMENTS & SITE WORKS

SEALED EXPOSED AGGREGATE TO DRIVEWAY AND ENTRY PORCH

TILED FLOORS, CARPET TO ALL BEDROOMS
20MM SMARTSTONE BENCHTOPS THROUGHOUT
WATERFALL END TO KITCHEN ISLAND BENCH

900MM UNDER BENCH OVEN, GAS COOKTOP, RANGE HOOD & 600MM DISHWASHER

2X PANASONIC REVERSE CYCLE SPLIT SYSTEM AIR CONDITIONER TO LIVING & MASTER BEDROOM

BARRIER SCREENS & WINDOW COVERINGS

LED DOWNLIGHTS THROUGHOUT

5 STAR RINNAI GAS HOT WATER SYSTEM

INTEGRATED ALFRESCO SLAB TILED & EXTENDED UNDER EAVES

COLOURBOND ROOF

COMPLETE LANDSCAPING, FRONT GARDEN, FRONT AND REAR TURF, FENCING, CLOTHES LINE & RENDERED STYLE LETTERBOX

Adam Paradise

Display Home Consultant

M. 0407 029 810

E. adam@paradigmhomes.com.au

CONTRACT
PRONTO

MORE INCLUDED
AS STANDARD

GUARANTEED
BUILD TIMES

FIXED PRICE
SITE COSTS